

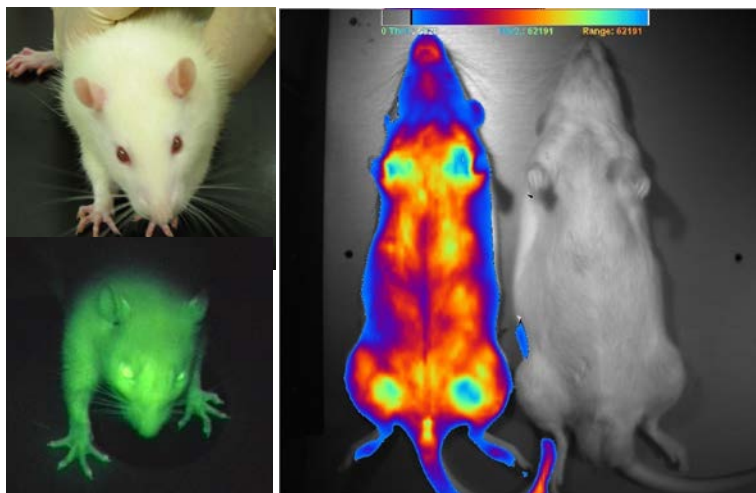
The Power of Bio-imaging Rat!

Eiji Kobayashi M.D. Ph.D.

Department of Organ Fabrication,
Keio University School of Medicine

Mice as one of the experimental animals have been widely used as a superb model. On the contrary, due to the physical body size of rats; 10 times bigger than mice, despite the fact that they are more suitable research tool for regenerative medicine, the establishment of experimental rats has been affected by the delay in genetic manipulation technology and cost factors. The author pushed forward the world-first research on genetic modification in the early 2000s by establishing bioimaging rats through the optimization of inbred rat species. In this lecture, I would like to introduce this historical background and show the recent research results.

In vivo luminescent method is the optimization of luminescent protein “Luciferase” which merges into the light-emitting substrate “Luciferin” which ends up with acquiring light-emitting function by itself. On the other hand, the fluorescence imaging method is to observe the long-wave visible light on live tissues as a reflected light by emitting a visible short-wave excitement light.

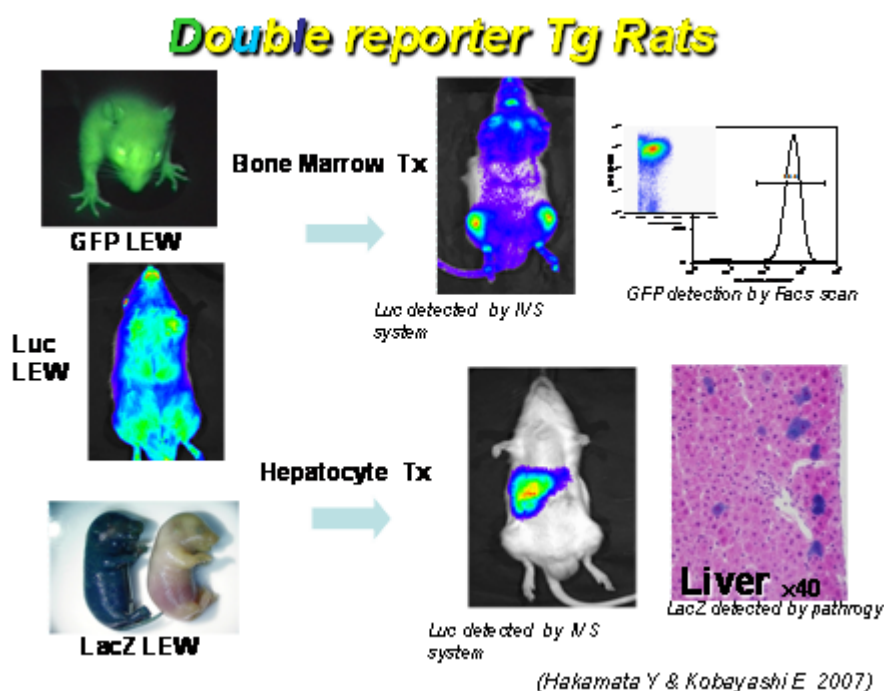


GFP Tg rat

Luciferase Tg rat

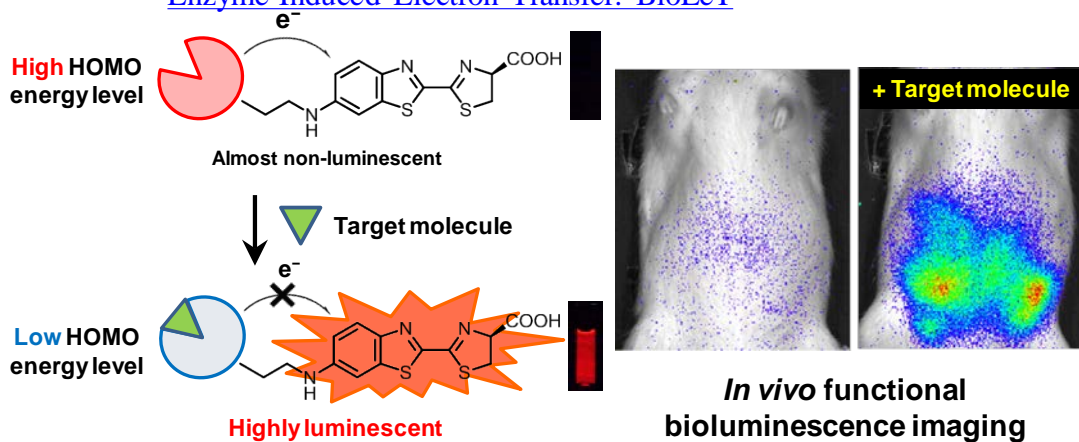
We had been created GFP Tg (2001) and Luciferase Tg rat (2006) and worked for organ transplantation /stem cell research. There are pros and cons that it emits sharp light and has no energy consumption, on the contrary, it requires decrease in the signal sensitivity to avoid halation and auto-fluorescence because it creates the light intake halation inside the tissue.

We have a focus on inbred rat line, LEW(MHC haplotype;RT1^l). When we will mate each Tg rat and another marker Tg rat, double reporter Tg rats can create as a F1 hybrid.



Luminescent and florescent molecules emit light when the electron in molecules in active status called “excitation state” returns to inactive status called “ground state”. Prof Urano group has found out the fact that the transfer of electron can logically control ON/OFF of florescent molecule (it emits photon from excitation state or not) through electron transfer from the binding electron donor around florescent molecule to luminophore (electron acceptor) in excitation state (See the below figure).

New Class of Bioluminogenic Probe Based on Bioluminescent Enzyme-Induced Electron Transfer: BioLeT



(Takakura H, et al. J Am Chem Soc. 2015)

Recent publications

Takakura H, Kojima R, Kamiya M, Kobayashi E, Komatsu T, Ueno T, Terai T, Hanaoka K, Nagano T, Urano Y

New class of bioluminogenic probe based on bioluminescent enzyme-induced electron transfer: BioLeT.
J Am Chem Soc. 2015 Apr 1;137(12):4010-3. doi: 10.1021/ja511014w. Epub 2015 Mar 19.

Ozeki N, Muneta T, Matsuta S, Koga H, Nakagawa Y, Mizuno M, Tsuji K, Mabuchi Y, Akazawa C, Kobayashi E, Saito T, Sekiya I.

Synovial mesenchymal stem cells promote meniscus regeneration augmented by an autologous Achilles tendon graft in a rat partial meniscus defect model.

Stem Cells. 2015 Jun;33(6):1927-38. doi: 10.1002/stem.2030.

Ishikawa J, Oshima M, Iwasaki F, Suzuki R, Park J, Nakao K, Matsuzawa-Adachi Y, Mizutsuki T, Kobayashi A, Abe Y, Kobayashi E, Tezuka K, Tsuji T. Hypothermic temperature effects on organ survival and restoration.

Sci Rep. 2015 Apr 22;5:9563. doi: 10.1038/srep09563

Zhou SB, Chiang CA, Xie Y, Li H, Liu K, Kobayashi E, Li QF:

In vivo bioimaging analysis of stromal vascular fraction-assisted fat grafting: the interaction and mutualism of cells and grafted fat.

Transplantation. 2014 Nov 27;98(10):1048-55. doi: 10.1097/TP.0000000000000397

Kainuma S, Miyagawa S, Fukushima S, Pearson J, Chen YC, Saito A, Harada A, Shiozaki M, Iseoka H, Watabe T, Watabe H, Horitsugi G, Ishibashi M, Ikeda H, Tsuchimochi H, Sonobe T, Fujii Y, Naito H, Umetani K, Shimizu T, Okano T, Kobayashi E, Daimon T, Ueno T, Kuratani T, Toda K, Takakura N, Hatazawa J, Shirai M, Sawa Y:

Cell-sheet Therapy with Omentopexy Promotes Arteriogenesis and Improves Coronary Circulation Physiology in Failing Heart.

Mol Ther. 2014 Nov 25. doi: 10.1038/mt.2014.225. [Epub ahead of print]

Montanari S, Wang XH, Yannarelli G, Dayan V, Berger T, Zocche L, Kobayashi E, Viswanathan S, Keating A.:

Development and characterization of a new inbred transgenic rat strain expressing DsRed monomeric fluorescent protein.

Transgenic Res. 2014 Oct;23(5):779-93. doi: 10.1007/s11248-014-9814-z. Epub 2014 Jul 11

Sekine H, Shimizu T, Sakaguchi K, Dobashi I, Wada M, Yamato M, Kobayashi E, Umezu M, Okano T:

In vitro fabrication of functional three-dimensional tissues with perfusable blood vessels.

Nat Commun. 2013;4:1399. doi: 10.1038/ncomms2406

Ozeki N, Muneta T, Koga H, Katagiri H, Otabe K, Okuno M, Tsuji K, **Kobayashi E**, Matsumoto K, Saito H, Saito T, Sekiya I.:

Transplantation of Achilles tendon treated with bone morphogenetic protein 7 promotes meniscus regeneration in a rat model of massive meniscal defect.

Arthritis Rheum. 2013 Nov;65(11):2876-86. doi: 10.1002/art.38099

Hata T, Uemoto S, Fujimoto Y, Murakami T, Tatenno C, Yoshizato K, **Kobayashi E**:

Transplantation of engineered chimeric liver with autologous hepatocytes and xenobiotic scaffold.

Ann Surg. 2013 Mar;257(3):542-7. doi: 10.1097/SLA.0b013e31825c5349.